

Get better at Math.
Get better at
everything.



Come experience the Cuemath methodology and ensure your child stays ahead at math this summer.



**Adaptive
Platform**



**Interactive Visual
Simulations**



**Personalized
Attention**

For Grades 1 - 10



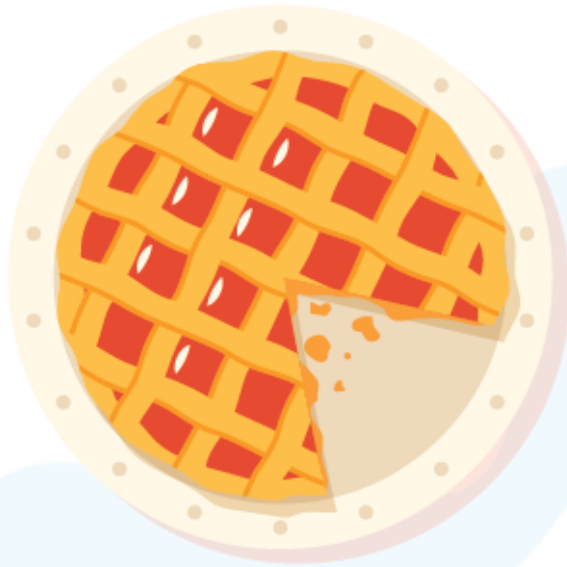
LIVE online classes
by trained and
certified experts.

Get the Cuemath advantage

Book a FREE trial class

3 DIGIT DIVISION WORKSHEET-III

- 1) Thomas was ordering pie for the party. If there are 672 people at the party and 8 people can eat from a pie. Then how many pies shall she buy?



- 2) Solve:

$$5 \overline{) 492}$$

- 3) A grade 1 teacher, Emma distributes 512 pencils equally among 32 children in her class. How many pencils will each child receive?



Answer Q.4 and Q.5 according to the given situation.

In a car factory, there are 18 assembly lines. Each assembly line manufactures cars at the same speed.

4) There are total 108 supervisors and 216 workers working in total. How many supervisors and workers are there in each assembly line?

5) If the factory produces 306 cars in a day, how many cars does each assembly line make each day?

6) Match the following element in column A which can completely divide the element in column B.

A	B
1. 21	a. 504
2. 18	b. 399
3. 23	c. 529

7) State whether the statement is true or false:
On dividing 361 from 19 we get 19 as the quotient.

8) Choose two numbers from 13, 187, 11, 14, 378 complete the sentence.

a) _____ \div _____ have a quotient 17

b) _____ \div _____ have a quotient 27

9) If a dozen bananas cost \$19.2, find the price of 4 bananas.



10) Divide the following:

a) $920 \div 23 = \underline{\hspace{2cm}}$

b) $225 \div 25 = \underline{\hspace{2cm}}$



When you learn math
in an interesting way,
you never forget.



25 Million

Math classes &
counting

100K+

Students learning
Math the right way

20+ Countries

Present across USA, UK,
Singapore, India, UAE & more.

Why choose Cuemath?

"Cuemath is a valuable addition to our family. We love solving puzzle cards. My daughter is now visualizing maths and solving problems effectively!"

- Gary Schwartz

"Cuemath is great because my son has a one-on-one interaction with the teacher. The instructor has developed his confidence and I can see progress in his work. One-on-one interaction is perfect and a great bonus."

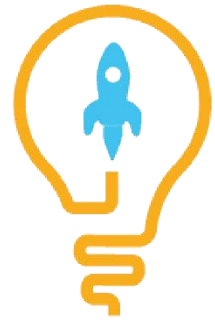
- Kirk Riley

"I appreciate the effort that miss Nitya puts in to help my daughter understand the best methods and to explain why she got a problem incorrect. She is extremely patient and generous with Miranda."

- Barbara Cabrera

Get the Cuemath advantage

Book a FREE trial class

**ANSWERS**

1)	84
2)	Quotient = 98, Remainder = 2
3)	16
4)	6 supervisors, 12 workers
5)	17
6)	1--b; 2--a; 3--c
7)	True
8)	a) 187, 11 b) 378, 14
9)	\$6.4
10)	a) 40 b) 9

FUN FACT

1. Symbol used for division is \div or $/$.
2. Multiplication is the inverse operation of division.
3. Division is one of the four basic arithmetic operations along with addition, subtraction and multiplication.

