

Get better at Math.
Get better at
everything.



Come experience the Cuemath methodology and ensure your child stays ahead at math this summer.



**Adaptive
Platform**



**Interactive Visual
Simulations**



**Personalized
Attention**

For Grades 1 - 10



LIVE online classes
by trained and
certified experts.

Get the Cuemath advantage

Book a FREE trial class

2 Digit Division Worksheet-4

1) The product of two numbers is 3168. If one of them is 48, find the other.

2) Calculate 72 divided by 8.

$$\underline{\hspace{1cm}} \div \underline{\hspace{1cm}} = \underline{\hspace{1cm}}.$$

3) Complete the statement and write the division expression:

There are equal groups of crayons.

$$\underline{\hspace{1cm}} \div \underline{\hspace{1cm}} = \underline{\hspace{1cm}}.$$



There are equal groups of

4) If the cost of 5 toy cars of the same price is \$95, what is the price of each car?

5) Fill in the blanks:

a) $93 \div \underline{\hspace{1cm}} = 31$

b) $52 \div 4 = \underline{\hspace{1cm}}$

6) Solve the division problem to find the values of quotient and remainder.

$$89 \div 15$$

Quotient

Remainder

7) The weekly income of Sarah is \$1400. What is her daily income if she earns the same amount every day?

8) Solve the division expressions to state whether if the following statements are true/false:

a) $54 \div 6 = \underline{\hspace{1cm}}$. is equal to $84 \div 7 = \underline{\hspace{1cm}}$.
(True/False)

b) $48 \div 6 = \underline{\hspace{1cm}}$. is greater than $64 \div 4 = \underline{\hspace{1cm}}$.
(True/False)

9) Carol has four bags with fifteen bed sheets in each. Calculate how many bed sheets she has in total?

10) In a grocery store, there is a total of 250 milk bottles arranged on five shelves equally. Calculate how many bottles are placed on each shelf?

When you learn math
in an interesting way,
you never forget.



25 Million

Math classes &
counting

100K+

Students learning
Math the right way

20+ Countries

Present across USA, UK,
Singapore, India, UAE & more.

Why choose Cuemath?

"Cuemath is a valuable addition to our family. We love solving puzzle cards. My daughter is now visualizing maths and solving problems effectively!"

- Gary Schwartz

"Cuemath is great because my son has a one-on-one interaction with the teacher. The instructor has developed his confidence and I can see progress in his work. One-on-one interaction is perfect and a great bonus."

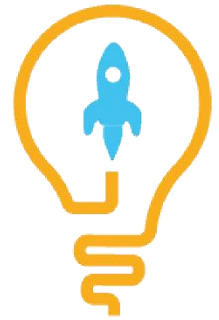
- Kirk Riley

"I appreciate the effort that miss Nitya puts in to help my daughter understand the best methods and to explain why she got a problem incorrect. She is extremely patient and generous with Miranda."

- Barbara Cabrera

Get the Cuemath advantage

Book a FREE trial class

**ANSWERS**

1)	66
2)	$72 \div 8 = 9$
3)	There are 3 equal groups of 4 crayons. $12 \div 3 = 4.$
4)	\$19
5)	a) 3 b) 13
6)	Quotient= 5 Remainder=14
7)	\$200
8)	a) False b) True
9)	60
10)	50 bottles

FUN FACT

1. Division is one of the four basic arithmetic operations along with [addition](#), [subtraction](#) and multiplication.
2. Symbol used for [division](#) is \div or $/$.
3. A number that exactly divides a given number is a [factor](#) of that number.

